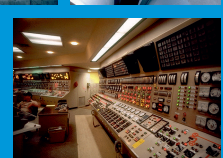
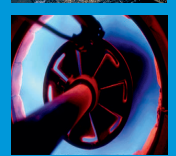
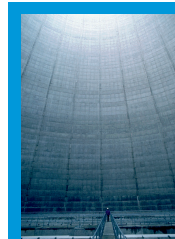
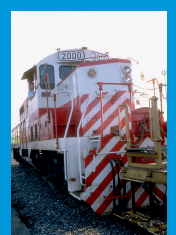
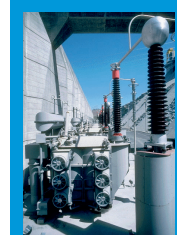




Supplying African Commerce & Industry for over 40 Years



Delivering Customer Expectations





"Small enough to care - large enough to cope"

WHO ARE WE?

Export Africa is a trading division of Rundle Holdings Ltd with extensive experience in all phases of the export process including sourcing, procurement, packing, consolidation, documentation and shipping. This experience, coupled with our consistent growth, is upheld by our commitment to efficiency and reliability.

WHAT CAN WE OFFER YOU?

We handle all aspects of our clients' overseas procurement needs: our staff look after your order from enquiry to delivery with periodic progress reports, if required, keeping you fully informed throughout the entire process. In the case of smaller orders, from several different sources, we arrange and supervise consolidation operations at our warehouse in Portsmouth, England thus keeping freight costs to a minimum and ensuring timely delivery of all your orders.

WHO ARE OUR CUSTOMERS?

Export Africa is committed to serving the needs of African companies and organisations and over the past 4 decades we have extended our client base to include both small and large organisations such as Private Sector Wholesale and Manufacturing Industry, Mining Industry, Parastatal Manufacturing and Service Industries, Government & Quasi-Government Departments and International Aid Organisations.

WHAT ARE OUR PRODUCTS?

We source merchandise from all corners of the globe - with the use of the latest computer and communication systems we regularly source from U.S.A., Europe and the Far East. We have the expertise and know-how to ensure that your orders are supplied efficiently hence meeting tight production and time criteria.



WHAT ARE THE BENEFITS?

- ▶ **Customer led, flexible approach.**
- ▶ **Single point of sourcing.**
- ▶ **Most competitive pricing** ensured by our volume buying power.
- ▶ **Total management** of all aspects of your overseas purchasing from enquiry to delivery.
- ▶ **Our computer database** allows us to quickly identify manufacturers worldwide.
- ▶ **Checking of all your goods** prior to packing and despatch.
- ▶ **Most competitive freight rates** (air/sea) due to our high volume of traffic.
- ▶ **Consolidation** of smaller orders from different manufacturers to save on freight costs.
- ▶ **No order too small.**

GENERAL PRODUCT RANGE

- ▶ **Mechanical & Mining - Spares & Equipment**
- ▶ **Electrical Engineering - Spares & Equipment**
- ▶ **Process Control and Instrumentation**
- ▶ **Railway Equipment - On Track and Off Track**
- ▶ **Fluid Power Equipment**
- ▶ **Automotive & Agricultural - OE & Replacement**
- ▶ **Office & Computer Equipment / Consumables**
- ▶ **Pharmaceutical and Medical Supplies**
- ▶ **Security Consumables**
- ▶ **Raw Materials**

We are proud of the personal and efficient service we offer our customers and look forward to the opportunity to demonstrate **our commitment to serving you.**



We are proud of the personal and efficient service we offer our customers and look forward to the opportunity to demonstrate ***our commitment to serving you.***



A Division of Rundle Holdings Ltd

*"Delivering your needs"***Automotive**

AE Autoparts
Bosch
Butec
Bulbs & Lamps
Cargo
CAV
Dana Spicer
Fleetguard Filters
Hella
Lucas
Mann Filters
Prestolite
Woodauto

**Bearings**

Glacier
Miba
SKF
FAG
Koyo
NTN

**Compressed Air & Fluid Power**

Abex Dennison
Atlas Copco
Bellis and Morcom
Compair Broomwade
Glocon
Ingersoll Rand
Norgrem Martinair
Pall
Pegler
Spirax Sarco

**Computer Equipment**

Canon
Compaq / HP
Dell
Epson
Lenovo
Toshiba

**Electrical**

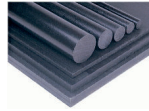
Avo / Megger
Brook Crompton
Brush
Cutler Hammer
G.E.C.
MK Electrical
M.E.M. Electrical
Schneider
Siemens
Square D

**Handling Eqpt & Spares**

Conveyors
Drum Motors
EOT Cranes
Forklifts
Hoists
Mobile Cranes
Pallet Trucks
Pullers
Stackers

**Materials**

PTFE
Solidur
Cork
Nylon
Felt
Glass Based Products
Steels
Rubber
Insulation
Tufnol

**Power Transmission**

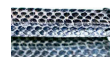
Belts
Chain
Gearboxes
Geared Drives
Pulleys
Sprockets
Taper Locks

**Process Control**

ABB Kent Taylor
Fanuc
Fisher Controls
Foxboro
Yokogawa
Land Electronite
Masoneilan
Philips
Rochester
Rosemount
Platon
Global Weighing

**Seals & Packings**

Crane
Chesterton
Dowty
George Angus
James Walker
Klinger
Pioneer Weston

**Security Consumables**

Bolt Seals
Cable Ties
Cable Seals
Container Seals
Courier / EMS Bags
Lead Seals
Mail Bag Seals
Plastic Seals
Railway Wagon Seals
Road Transport Seals
Electronic Seals
Handcuffs

**Tools (Machine and Hand)**

Cutting & Grinding
Hand Tools
Power Tools
Machine Tools
Safety Equipment
Solvents
Industrial Cleaners

**Valves**

Amri
Crane
De Zurick
Ross
Saunders
Serck
Spirax
Taylor

**Vehicles (Commercial) & Spares**

MAN
Scania
Foden
Ford
Cummings
Leyland
John Deere
Caterpillar
Mercedes Benz
Land Rover
Toyota



*Defining
Products for
African
Industry*

Please note the products listed are those in our regular scope of supply - we would welcome the opportunity to quote for your specific requirements including products outside this range.

Customer's Notes



Durham Street, Portsmouth, PO1 1NR, England
Tel : +44 (0)23 9282 3590 Fax : +44 (0)23 9281 2038
Email : sales@rundleholdings.co.uk Web : www.rundleholdings.co.uk